

THE BEST QUALITY IN COLPOSCOPIC IMAGE

COLPOSCOPE **OP-C2**



- 3 magnifying steps
- Dioptic regulation
- Gentle movements

COLPOSCOPE **OP-C2**

HIGH PERFORMANCE, COMPACT DESIGN

The OPTOMIC OP-C2 Colposcope has been designed to perform diagnostic observations, routine medical office interventions and small surgical activities in the most convenient and effective way for the health professional.

Its small size and the use of light and highly resistant materials for its manufacture provide this equipment with an excellent mobility and adaptability even in the smallest offices.

The collimated lenses, and the high-power light source, Fibrolux LED HP, provide the OP-C2 colposcope with excellent optical quality, resulting in high-brightness, sharp and shadow-free images.

Accessories such as supports, trays and image dividers complete this equipment and make it a great work tool that cannot be missing in any medical office.

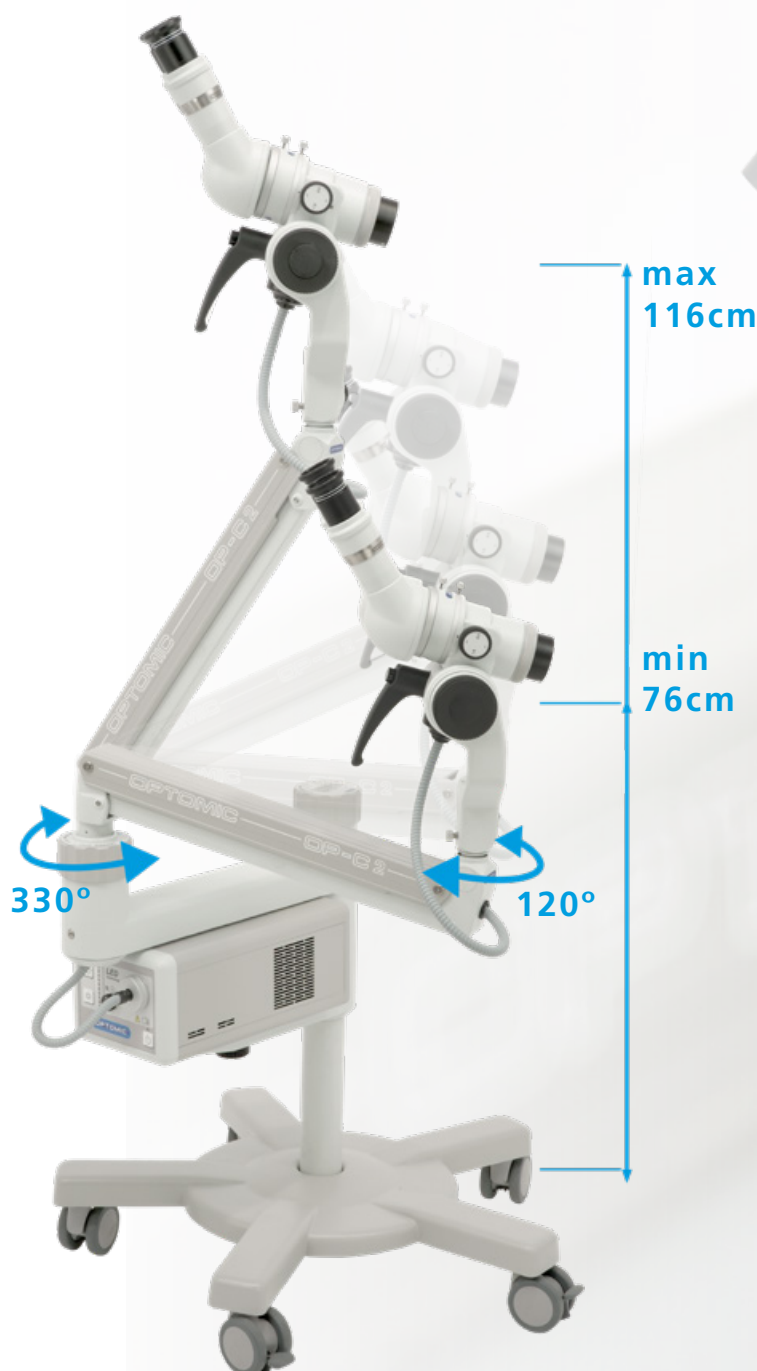


"BRIGHT, CLEAR AND SHADOW-FREE IMAGES WILL IMPROVE YOUR
EVERYDAY EXAMINATION WORK WITH OUR
OP-C2 COLPOSCOPE"



EASE OF HANDLING

Through a handle located at the base of the head and thanks to its balanced design, tapered bearings and Teflon discs, the OP-C2 can be transported and placed in the desired position with one hand.



ROLLING STAND

Provides firm support, and easy to move thanks to its five wheels with brakes.



CONTROL LEVER

You can change the position angle to improve ergonomics in handling.

Made of high-performance plastic

STABILITY AS A KEY PRINCIPLE

The equipment has friction adjustment brakes that allow the equipment to fixed it in the desired position and provide great stability, even in the most complex movements.



"STABLE MOVEMENTS IS THE BASIS OF HIGH PRECISION"



FRICTION ADJUSTMENTS AND BRAKE

Provides precision to movements and stability in the chosen position.

THE REQUIRED BASIS FOR A GOOD COLPOSCOPE

The stereoscopic head of the OP-C2 is combined with a binocular tilted at 45° and an objective with large diameter lenses. All of this provides a perfect transmission of light, generating bright images of high resolution and contrast, keeping the natural colour of the elements and preventing colour or shape distortions.

- **WIDE FIELD EYEPIECES**
Independent dioptric regulation for each eye.

- **250mm LENS**
Great brightness, with micrometric focus.

- **MAGNIFICATION DRUM**
Three-step magnification changer with Galileo system.

"A SHARP VISION FOR A CLEAR DIAGNOSIS "

- **LENS**
300mm
OPTIONAL

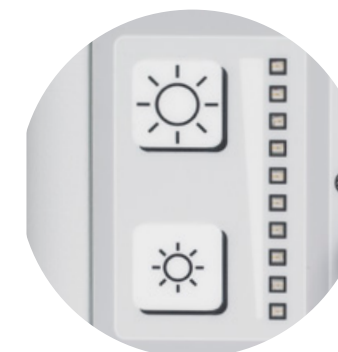
HIGH LIGHTING POWER FOR ALL YOUR NEEDS

OP-C2 Colposcope includes Fibrolux LED HP cold light source.

This high-performance, high-intensity light system provides more than 60,000 operating hours.

Fibrolux LED HP can be quickly and easily removed to be used for other activities such as hysteroscopy.

"OUR BEST LIGHT TO GUIDE YOUR STEPS"



Electronic control of eco-friendly standby luminance



Storz type connection, Olympus



Green or amber filter (depending on specialty)
Warm light filter



Camera module (optional)

FIBROLUX LED HP

- LED useful life: over 60,000 hours
- High light output 10,000 Klux (measured at the end of a standard 4.8mm x 1.8m fibre optic cable.)
- Two colour temperatures, 6,000°K and 4,750° K
- Light intensity control without colour variation.
- Low consumption
- Green or amber filter (depending on specialty)
- Double forced ventilation system (speed self-control)
- Standby With minimal ecological consumption (EuP Directive.)
- Robust unit, fully made of aluminium
- 12v DC external camera connection (7.5v DC optional)
- 12v DV monitor connection
- Power connection for monitor or PC Remote standby connection
- Dimensions: 150 x 120 x 290mm
- Supply: 100 ~ 240 DCV
- Weight: 4.45 Kg.

FULL HD TECHNOLOGY IN THE PALM OF YOUR HAND

With OPTOMIC's OP-TV10 HD image splitter, the OP-C2 becomes a powerful equipment of digital high definition videocolposcopy.

Projection of the image on a monitor, freezing of images for analysis, or the possibility of video recording through a capture device, are real options with this easy-to-use, compact device.

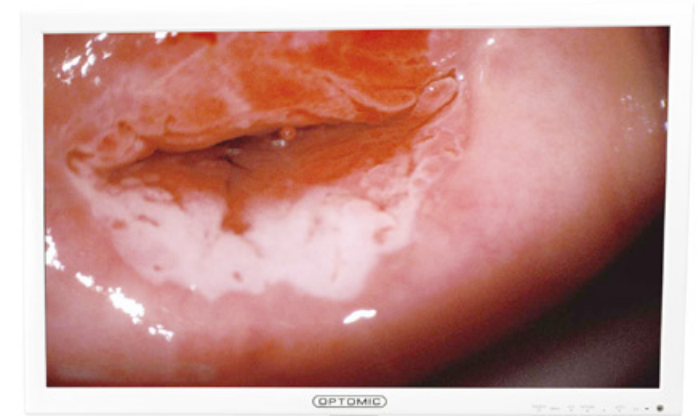
"HIGH RESOLUTION IMAGES
AS A GREAT ALLY IN SCREENING"

OP-TV10 HD (optional)

- 1080p/60Hz Resolution
- 80/20 Lumiere cube image splitter system and f=60mm lens with dielectric multilayer treatments
- Independent power supply and video outputs, or integrated into Optomic LED Light Sources
- Splitter control buttons with watertight keys: WB, HDMI output image freezing and shutdown

FULL HD 22" MONITOR

The OP-MV22-MD FHD monitor provides an image definition with a high level of detail and great colour accuracy.



SCREEN HOLDER (optional)

Wide range of high resistance holders for every need.

OP-MV22 MD FHD (optional)

- LCD monitor with LED-backlight technology and Full HD Resolution 1920 x 1080 / 60Hz / 16.7 million colors.
- Input Channels
 - HDMI (High Definition Multimedia Interface)
 - Composite video - 1 input connector (1.0Vp-p, 75Ω terminal) / 1 output connector (loop-through out)
 - DVI (Digital Video Interface)
 - VGA (RGB-PC)
 - SD-SDI 3G / HD - BNC, 75ohm, 1 input connector / 1 output connector (loop-through out)





GENERAL FEATURES

■ EYEPIECE	Stereoscopic with micrometric focusing.
■ BINOCULAR	45° tilted binocular
■ HEAD	"Wide field", with eye protection.
	Adjustable interpupillary distance: from 54 to 74mm
	Dioptic adjustment of hyperopia and myopia: +/- 5 diop.
■ LENSES	f=250mm Lens (optional f=300mm).
■ MAGNIFICATION EXCHANGER	3-position Galileo system (0.6x, 1x, 1.6x)
■ MAGNIFICATION RANGE	3.5x to 17.5x depending on the chosen combination of lens, binocular and eyepiece.
■ LIGHT SYSTEM	Coaxial through lens with LED light source (green filter)
■ LIGHT CONDUCTION	Fibre optic cable
■ MOVEMENT SYSTEM	Universal movement by means of angular and conical bearings and Teflon discs. Hardness and blocking adjustment. Soft Move system.
■ STAND	5-wheel stand with independent brakes.
■ VOLTAGE	100/240V 50/60Hz
■ NET WEIGHT (body)	20 Kg
■ OPTIONAL ACCESSORIES	Image splitters (different options) Digitally Soft Software
	Screen holders
	Gynecological chair support Laptop tray
	Camera tray

OPTOMIC ESPAÑA S.A.

Madroño, 4. E-28770 Colmenar Viejo, Madrid, Spain
Tel: +34 91 804 44 44 • Fax: +34 91 803 84 14
export@optomic.com • www.optomic.com